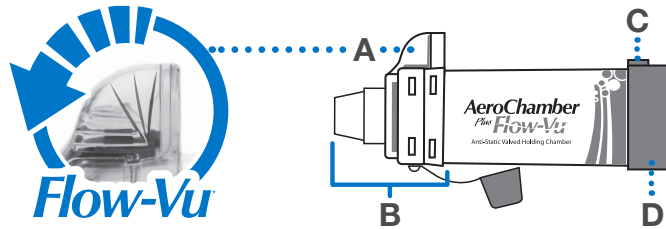


AeroChamber Plus Flow-Vu*

Anti-Static Valved Holding Chamber



INTENDED USE

This chamber is intended to be used along with a metered dose inhaler to deliver aerosol medication to your lungs as prescribed by your healthcare provider.

BEFORE EACH USE

This chamber can be used directly out-of-package. Ensure these instructions and the instructions supplied with the inhaler have been read. Carefully examine the chamber and remove any foreign objects. Replace immediately if any damaged or missing parts.

Notes



SLOW DOWN inhalation if you hear the whistle sound, it means you are inhaling too quickly.

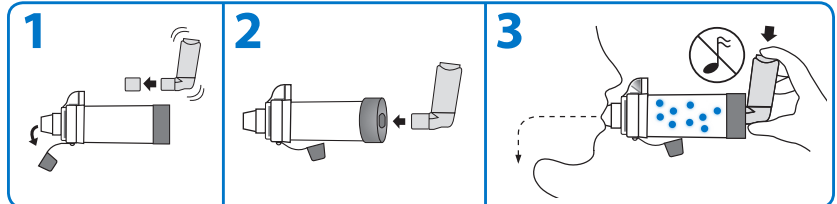


If someone is helping you they can use the **Flow-Vu*** Inhalation Indicator to ensure a good seal, coordinate pressing the inhaler with inhalation and to count the number of breaths taken. The **Flow-Vu*** Indicator moves toward you as you inhale and only moves if you have a proper seal.

1x Administer one (1) puff at a time. Follow instructions supplied with the inhaler on how long to wait before repeating.

HOW TO USE YOUR CHAMBER

For preparation of the inhaler, follow the instructions supplied with the inhaler.



1 Remove caps from the inhaler and mouthpiece chamber. Shake the inhaler immediately before use as per the instructions supplied with it.

2 Insert the inhaler into the backpiece of the chamber. Put mouthpiece into mouth and close your lips around it to ensure an effective seal.

3 Exhale then press the inhaler once at the beginning of a slow inhalation. Inhale slowly and deeply through the chamber until a full breath has been taken. Hold your breath for 5-10 seconds before exhaling. **OR** Exhale and press the inhaler once at the beginning of a slow inhalation. Breathe in and out through the chamber for 2-3 breaths keeping lips sealed around chamber mouthpiece.



You can watch Easy to Use patient videos on [YouTube.com](https://www.youtube.com)



CLEANING INSTRUCTIONS

This chamber can be used right out-of-package and then cleaned weekly.



1 Remove the backpiece (**D**). To detach the frontpiece (**B**), twist chamber as shown.

2 Soak the parts for 15 minutes in a mild solution of liquid dish detergent and luke-warm clean water. Agitate gently. Rinse parts in clean water. **OR** Place parts in top rack of dishwasher. Ensure product is securely placed face up. Run the dishwasher on a normal or light cycle. Do not heat dry.

3 Shake out excess water and allow to air dry in a vertical position. Ensure parts are dry before reassembly.

4 To reassemble, fit the frontpiece (**B**) on the end of the chamber and twist firmly until securely locked into position. Center the alignment feature (**C**) on the backpiece with the **Flow-Vu*** Inhalation Indicator (**A**), as shown. Press firmly to attach the backpiece (**D**).

Notes

- Do not boil or sterilize.
- Product should be replaced after 12 months of use.
- This product contains no latex.
- Do not share this medical device.
- If you notice medication build-up in your chamber, wash the inside of the chamber gently with a soft cloth.
- Dishwashing with overly dirty dishes is not recommended.
- If cleaning in a dishwasher use a rinse aid.

Cautions

- Do not leave the chamber unattended with children. This is not a toy.
- Product may be permanently damaged if boiled, sterilized or cleaned in a dishwasher at a temperature above 70°C.